



FLANGE TOOL INNOVATION

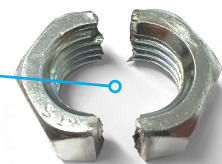
INFORMATION SHEET

EQUALIZER NUTSPLITTER TI RANGE

DESIGNED TO MEET THE
CHALLENGES OF BOLTED
PIPE-LINE FLANGE JOINTS

NS TOOLS	UNC HEAVY HEX STUD SIZE	UNC HEAVY NUT A/F SIZE	METRIC STUD SIZE	METRIC NUT A/F SIZE
NS12TI	1/2", 5/8"	0.88" to 1.06"	M12, M16, M20	19 mm to 30 mm
NS15TI	3/4", 7/8"	1.25" to 1.44"	M16, M20, M22	24 mm to 32 mm
NS20TI	7/8", 1", 1-1/8"	1.44" to 1.81"	M24, M27, M30	36 mm to 46 mm

A single heat-treated tool-steel cutting tip has achieved 100 cuts of high-grade heavy hex nuts



info@equalizerinternational.com
www.equalizerinternational.com



High strength revolving Composite handle for vibration and shock isolation allows for safer working.

Integrated steel shroud to enclose the cutting zone and protect against flying particles

Optimised Cutting head geometry allowing the nut splitter to be used on a wide range of flange joints; including ones that were previously too tight for nut splitters to fit.

The NS tool range includes a selection of 'TI' Integral Hydraulic tools which feature Equalizer's proven small pump built into the back end of the tool; useful for subsea applications and when working at heights. No need for hoses, separate hand-pumps or couplings.

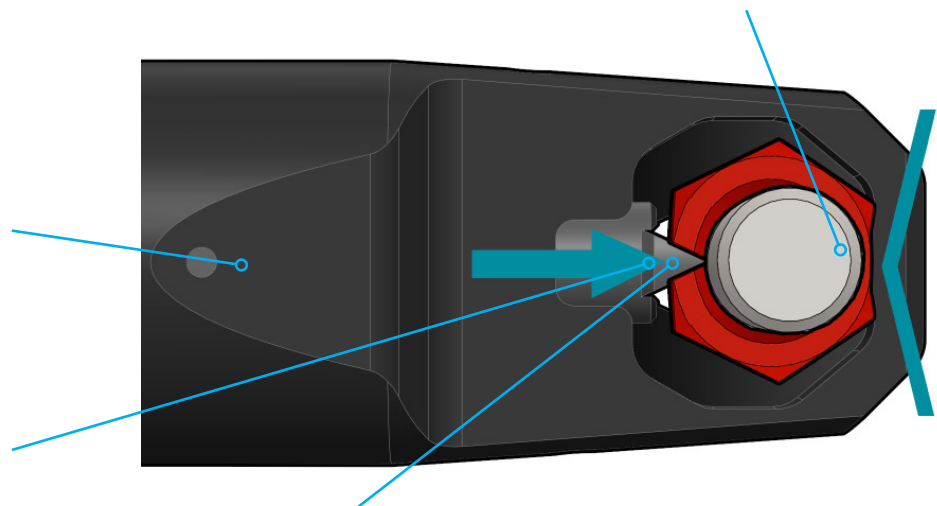
Drop-tested revolving anchor point and high-strength safety bond included as standard



The combination of the sharp cutting tip and opposing convex reaction point encourages more efficient splitting by spreading the nut open rather than squashing the nut onto the stud. This makes it easier to rotate the nut for the second cut.

Integral hydraulic cylinder and high grade materials make this the smallest and lightest nut splitter on the market

Quick and easy cutting tip replacement



Cutting tip made from heat-treated shock-resisting tool steel for better cut and longer life