



ZG4™

ZERO-GAP MECHANICAL FLANGE SPREADER

SPREADING FORCE = 3.7 T (37 kN) per tool
 It is recommended that tools are used in pairs giving
 $2 \times 3.7 = 7.4 \text{ T (74 kN)}$
SPREADING DISTANCE = 0-75mm (0-2.95")

TOOL WEIGHT = 4.5 kg (10 lbs)

KIT COMPONENTS

- 1 x ZG4™ Tool
- 1 x 150 mm (5.91") Vernier Calliper
- 1 x 3/8" Drive Torque Wrench and Socket
- 1 x Safety Block
- 2 x M16 (5/8") Collets
- 2 x M20 (3/4") Collets
- 1 x Instruction Manual
- 1 x Robust Carry Case with Protective Foam Inserts
- Kit Part No: 616161-01

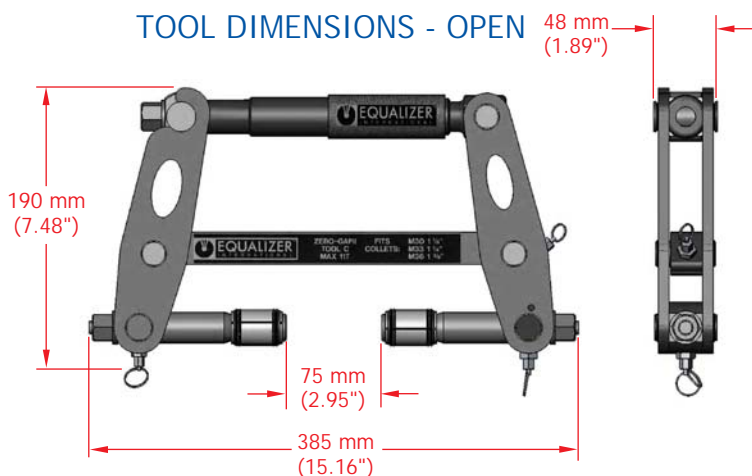


WEIGHTS AND DIMENSIONS

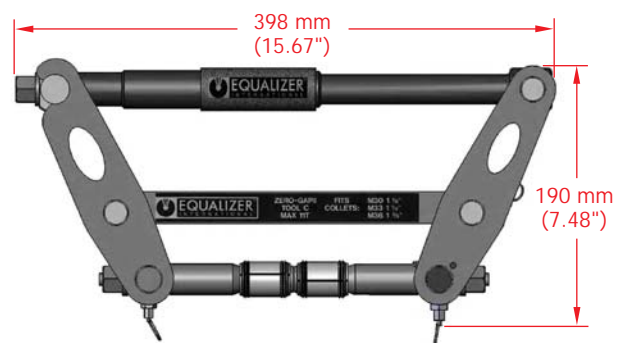
TOOL WEIGHT = 4.5 kg (10 lbs)
 GROSS KIT WEIGHT = 13 kg (28.5 lbs)

Carry Case Dimensions: 544 x 388 x 159 mm (21.41" x 15.50" x 6.25")

TOOL DIMENSIONS - OPEN



TOOL DIMENSIONS - CLOSED



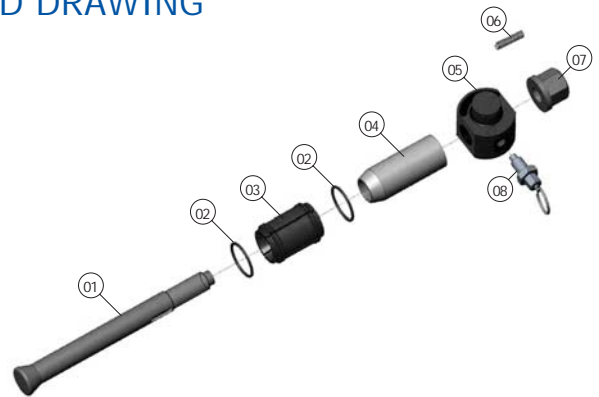
RANGE OF APPLICATION

The ZG4™ is useable on all standard flanges that have been specified to accept the following bolt sizes: M16, M20, 5/8", 3/4". This includes ANSI, DIN, SPO, ASME, API, and BS flanges.

For a detailed range of application please request the Zero-Gap Operator Instruction Manual.

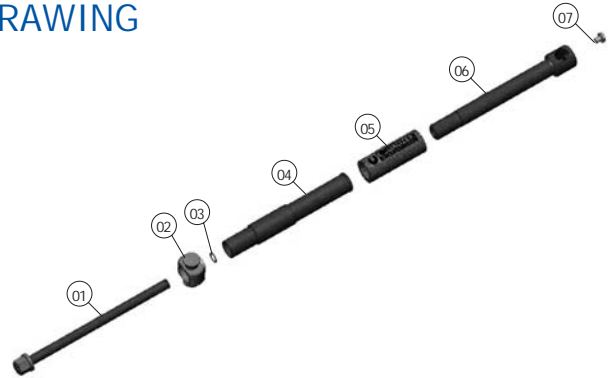
COLLET HEAD PARTS LIST AND EXPLODED DRAWING

ITEM	PART No.	DESCRIPTION	QUANTITY
01	610101	COLLET HOLDER	02
02	611001	M16 SPRING RING*	04
	611101	M20 SPRING RING*	04
03	610201	M16 COLLET*	02
	610301	M20 COLLET*	02
04	610501	DRIVE CONE	02
05	610601	COLLET UNION	02
06	610701	CENTERING SPRING 1	02
07	610801	COLLET NUT	02
08	900502	COLLET SPRING PLUNGER*	02



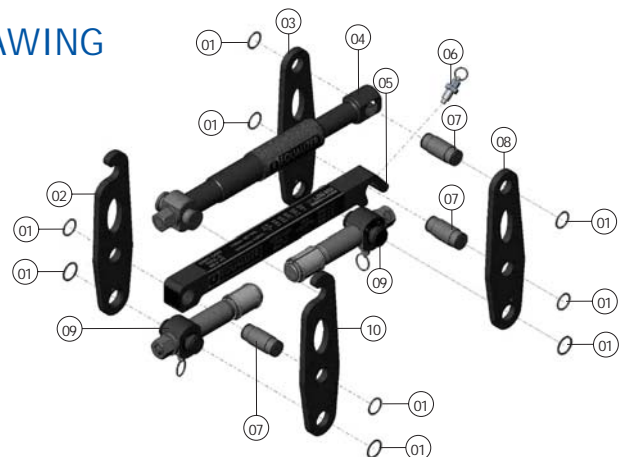
ACTUATOR PARTS LIST AND EXPLODED DRAWING

ITEM	PART No.	DESCRIPTION	QUANTITY
01	612201	ACTUATOR BOLT	01
02	612501	OPEN ACTUATOR UNION	01
03	401301	ACTUATOR RETAINING RING*	01
04	612701	ACTUATOR SLEEVE	01
05	612801	FOAM GRIP	01
06	612901	CLOSED ACTUATOR UNION	01
07	613001	ACTUATOR RETAINING BOLT	01



ZG4™ PARTS LIST AND EXPLODED DRAWING

ITEM	PART No.	DESCRIPTION	QUANTITY
01	611501	CANTILEVER RETAINING RING*	10
02	611401	OPEN LEG R/H	01
03	611801	CLOSED LEG R/H	01
04		SEE ACTUATOR PARTS LIST	
05	612101	CANTILEVER	01
06	612001	CANTILEVER PLUNGER	01
07	611701	CANTILEVER PIN	03
08	611901	CLOSED LEG L/H	01
09		SEE COLLET HEAD PARTS LIST	
10	611301	OPEN LEG L/H	01



* Items are supplied in Spares Kit Part No: 616060-01