



# ZG25TE

ZERO-GAP IN-LINE  
HYDRAULIC FLANGE  
SPREADER

**SPREADING FORCE = 25 T (250 kN) per tool**  
It is recommended that tools are used in pairs giving  
2 x 25 = 50 T (500 kN)  
**SPREADING DISTANCE = 0-120mm (0-4.72")**

**TOOL WEIGHT = 24 kg (52.9 lbs)**

## KIT COMPONENTS

- 1 x ZG25TE Tool
  - 1 x Spreading Plug
  - 1 x 10,000 psi (700 bar) HP550S Sealed Hand Pump with Gauge
  - 1 x 10,000 psi (700 bar) Hydraulic Hose, 2 m (78.75")
  - 1 x 300 mm (12") Vernier Calliper
  - 1 x Spacer Plate
  - 1 x Safety Block
  - 1 x Instruction Manual
  - 1 x Carry-Case with Protective Foam Inserts
- Product Code: ZG25TESTD



## COLLETS (purchased separately)

- |                          |                          |
|--------------------------|--------------------------|
| 2 x M76 (3") Collets     | 2 x M90 (3 1/2") Collets |
| 2 x M80 (3 1/4") Collets | 2 x M95 (3 3/4") Collets |
| 2 x M84 (3 3/8") Collets | 2 x M100 (4") Collets    |

## WEIGHTS AND DIMENSIONS

TOOL WEIGHT = 24 kg (52.9 lbs)  
GROSS KIT WEIGHT = 50 kg (110 lbs)

Carry-Case Dimensions: 890 x 570 x 165 mm (35.04" x 22.44" x 6.50")

### TOOL DIMENSIONS - CLOSED



### TOOL DIMENSIONS - OPEN



### SPREADING PLUG DIMENSIONS



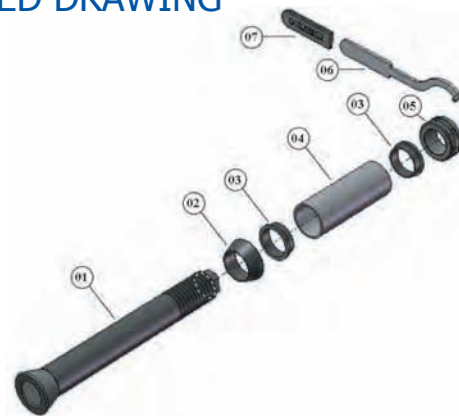
## RANGE OF APPLICATION

The ZG25TE is usable on all standard flanges that have been specified to accept the following bolt sizes: M76, M80, M84, M90, M95, M100, 3", 3 1/4", 3 1/2", 3 3/4", 4". This includes ANSI, DIN, SPO, ASME, API and BS flanges.

For a detailed range of application please request the Zero-Gap In Line Hydraulic Operator Instruction Manual.

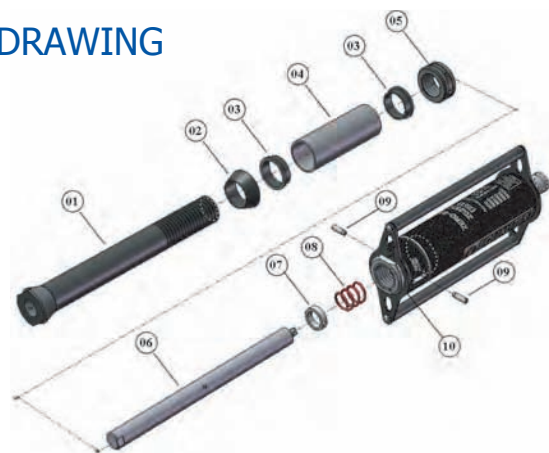
## SPREADING PLUG PARTS LIST AND EXPLODED DRAWING

ITEM	PART No.	DESCRIPTION	QUANTITY
01	672301-01	COLLET HOLDER	01
02	672201-02	DRIVE CONE	01
03	672101-04	THRUST WASHER	02
04	675501-02	DRIVE TUBE	01
05	672001-02	DRIVE NUT	01
06	672401-01	PISTON ROD	01
07	671401-01	SPRING COLLAR	01
08	661301-01	SAFETY SPRING	01
09	661101-02	SPRING COLLAR DOWELL	02
10		SEE HYDRAULIC CYLINDER PART LIST	



## ACTUATOR PARTS LIST AND EXPLODED DRAWING

ITEM	PART No.	DESCRIPTION	QUANTITY
01	672301-01	COLLET HOLDER	01
02	672201-02	DRIVE CONE	01
03	672101-04	THRUST WASHER	02
04	675501-02	DRIVE TUBE	01
05	672001-02	DRIVE NUT	01
06	672401-01	PISTON ROD	01
07	671401-01	SPRING COLLAR	01
08	661301-01	SAFETY SPRING	01
09	661101-02	SPRING COLLAR DOWELL	02
10		SEE HYDRAULIC CYLINDER PART LIST	



## HYDRAULIC CYLINDER PARTS LIST AND EXPLODED DRAWING

ITEM	PART No.	DESCRIPTION	QUANTITY
01	402101-01	HANDLE SCREWS	02
02	633001-01	HANDLE RETAINING BOLT	04
03	671501-01	CYLINDER HANDLE FRONT PROFILE	01
04	671201-01	CYLINDER CAP	01
05	671001-01	PISTON ROD BEARING	01
06	671101-01	HYDRAULIC RETURN SPRING 1	01
07	670901-01	HYDRAULIC RETURN SPRING 2	01
08	671701-01	CYLINDER HANDLE	01
09	671601-01	CYLINDER HANDLE REAR PROFILE	01
10	670801-01	HYDRAULIC PISTON	01
11	670601-01	PISTON SEAL BACKUP RING	01
12	670501-01	PISTON SEAL	01
13	670701-01	PISTON BEARING	01
14	670401-01	HYDRAULIC CYLINDER	01
15	300901-01	FEMALE HALF COUPLER	01

