



FA6TE

HYDRAULIC FIXED FLANGE
AND ROTATIONAL
ALIGNMENT TOOL

ALIGNING FORCE:
10,000 psi (700 bar) = 6 T (60 kN)

TOOL WEIGHT = 15.5 kg (34.1 lbs)

KIT COMPONENTS

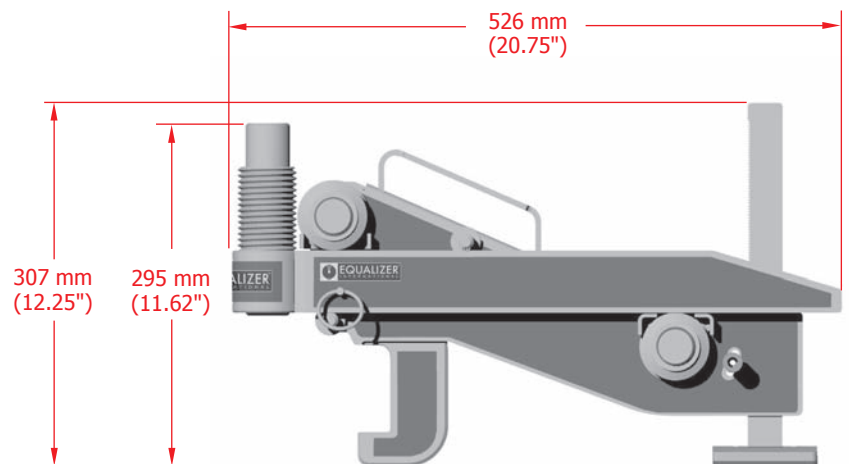
- 1 x FA6TE Tool
 - 1 x 10,000 psi (700 bar) 6T Hydraulic Cylinder
 - 1 x 10,000 psi (700 bar) Hydraulic Hose, 2 m (78.75")
 - 1 x 10,000 psi (700 bar) HP350S Sealed Hand Pump with Gauge
 - 1 x Instruction Manual
 - 1 x Carry-Case with Protective Foam Inserts
- Product Code: FA6TESTD



WEIGHTS AND DIMENSIONS

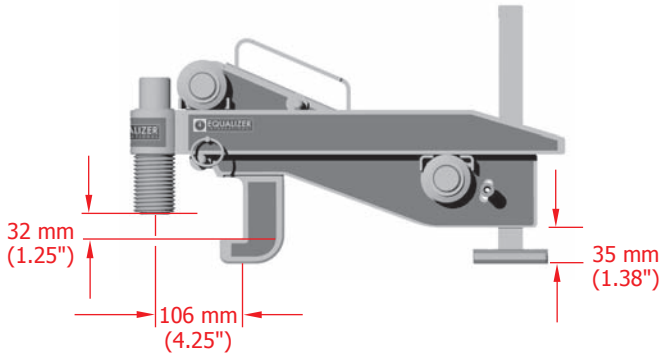
- Tool with Hydraulic Cylinder = 15.5 kg (34.1 lbs)
- Carry-Case with Foam Inserts = 7.5 kg (16.5 lbs)
- GROSS KIT WEIGHT = 28 kg (61.1 lbs)

Carry-Case Dimensions:
640 x 540 x 165 mm (25.20" x 21.26" x 6.50")

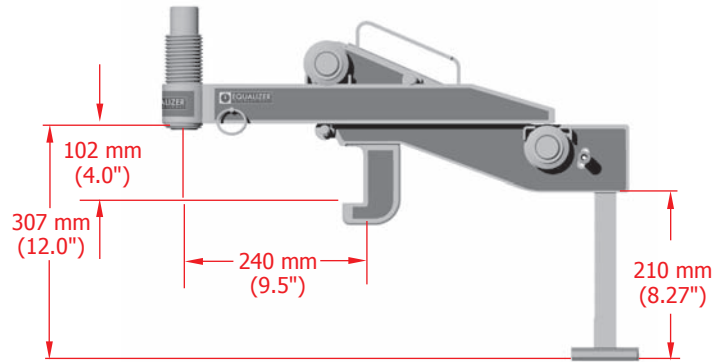




MINIMUM EXTENSION



MAXIMUM EXTENSION

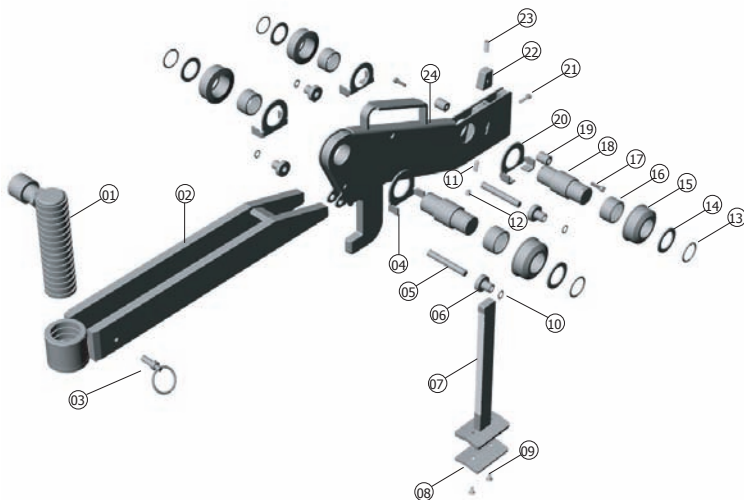


RANGE OF APPLICATION

BY FLANGE TYPE, CLASS AND DIAMETER

ANSI B 16.5		API		BS 3293		MSS SP-44
THREADED FLANGES 600# 20" Thru 24" 900# 18" Thru 24" 1500# 8" Thru 12" 2500# 5" Thru 12"	SLIP-ON FLANGES 600# 18" Thru 24" 900# 14" Thru 24"	API STANDARD 605 WELD NECK FLANGES 300# 30" Thru 60"	API TYPE 6BX WELD NECK FLANGES 10,000# 71/16" Thru 163/4" 15,000# 71/4" 20,000# 41/16" Thru 71/16"	SLIP-ON FLANGES 300# 30" Thru 36" 400# 26" Thru 36" 600# 26" Thru 36"	WELD NECK FLANGES 300# 28" Thru 36" 400# 26" Thru 36" 600# 26" Thru 36"	WELD NECK FLANGES RTJ 300# 28" Thru 36" 400# 26" Thru 36" 600# 26" Thru 36" 900# 26" Thru 36"
LAP JOINT FLANGES 600# 24" 900# 18" Thru 24" 1500# 10" Thru 24" 2500# 6" Thru 12"	WELD NECK FLANGES 600# 18" Thru 24" 900# 14" Thru 24" 1500# 6" Thru 24" 2500# 5" Thru 12"	API TYPE 6B INTEGRAL FLANGES 2,000# 263/4" Thru 30" 3,000# 263/4" Thru 30" 5,000# 135/8" Thru 211/4" 10,000# 71/16" Thru 163/4" 15,000# 71/16" Thru 135/8" 20,000# 41/16" Thru 9"	API TYPE 6BX INTEGRAL FLANGES 3,000# 203/4" 5,000# 9" Thru 11"	SLIP-ON FLANGES RTJ 300# 28" Thru 36" 400# 26" Thru 36" 600# 26" Thru 36"	WELD NECK FLANGES RTJ 300# 28" Thru 36" 400# 26" Thru 36" 600# 26" Thru 36"	

PARTS LIST AND EXPLODED DRAWING



ITEM	PART No.	DESCRIPTION	QUANTITY
01	903101-01	6T HYDRAULIC ADJUSTING CYLINDER	01 each
02	900302-01	WING	01 each
03	900502-01	M10 SPRING PLUNGER	01 each
04	900701-02	FINGER STOP-FRONT	01 set of 2
05	900801-02	SUPPORT SHAFT	01 set of 2
06	900901-04	SUPPORT ROLLER	01 set of 4
07	901001-01	DROP LEG	01 each
08	402501-01	DROP LEG PAD	01 each
09	402601-02	COUNTER-SUNK SCREW	01 set of 2
10	901301-04	CIRCLIP	01 set of 4
11	402201-01	COIL SPRING	01 each
12	402301-01	GRUB SCREW	01 each
13	901601-04	SPIRAL CLIP	01 set of 4
14	901701-04	FRICITION WASHER	01 set of 4
15	901801-04	ROLLER	01 set of 4
16	901901-04	NEEDLE BEARING	01 set of 4
17	402701-02	SCREW M5 x 20	01 set of 2
18	902101-02	SHAFT	01 set of 2
19	402801-02	RELEASE KNOB	01 set of 2
20	902301-02	FINGER STOP REAR	01 set of 2
21	902401-01	BOLT M6 x 10	01 each
22	402901-01	DROP LEG LOCK	01 each
23	902601-01	ADJUSTING SCREW	01 each
24	902701-01	MAIN BODY/HOOK (not illustrated)	01 each
	902801-01	CARRY-CASE C/W FOAM (not illustrated)	01 each
	902901-01	DECALS (Set of 5) (not illustrated)	01 each